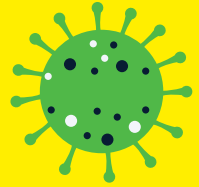


MANAGING WASTE AT SCHOOL IN LIGHT OF COVID-19

During the **transition back to school** there may be some confusion and concern about **managing waste correctly**. To help you navigate these concerns the **My Waste team** has put together this short guidance note to explain and encourage the **correct segregation** and **presentation** of school waste. It is inevitable that waste may increase in the short term as additional school supplies are purchased so it's really important that the school manages waste **efficiently and effectively**.



RECYCLING:

Recycling of waste should still be promoted and encouraged with all students and staff. Remember the following wastes are all suitable for recycling:

- All Cardboard.
- All Paper – coloured, printed, books, catalogues, envelopes etc.

- Rigid plastics – all pots, tubs, trays & bottles.
- Tin and aluminium cans.
- Tetra packs.

All items should be placed **Clean, Dry and Loose** in the Recycling bin.

Don't forget to use your school battery box to recycle batteries.

FOOD WASTE:

Most schools are provided with a separate food waste collection service by their waste contractor.

All food waste generated on the school premises should be separated by staff and students.

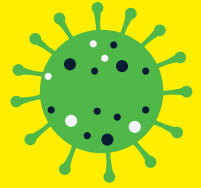
This includes:

- Fruit & fruit peelings.
- Left overs such as sandwiches and cooked lunches.
- Bread, buns, pastries.
- Tea bags & coffee grounds.
- Milk.
- Small quantities of kitchen roll.
- Compostable packaging such as sandwich boxes and coffee cups that are certified compostable.

We encourage the use of liners to keep food waste caddies or bins clean and odour free. There is a wide variety of paper or bio-plastic liners available, some supplied directly by the waste contractor.

To ensure the liner is suitable make sure it carries the Standard EN 13242 or the Cre certification logo:





SINGLE USE ITEMS:

Ireland had improved enormously in addressing awareness about and consumption of single use items. However concerns about the spread of Covid-19 has led to an increase in packaging such as plastic film to cover food and disposable cups have become the norm again. In a school setting it is still possible to discourage the consumption of single use items. Students and staff should be encouraged to avoid

- Disposable or single use face masks;
- Food & beverage packaging such as disposable coffee cups & sandwich wrappers;
- Single use plastic bottles;
- Single serve condiments such as butter, jam, ketchup & sugar.

Instead lunch boxes, reusable bottles and cups should be used.

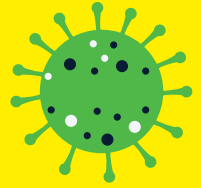
WASTE:

It is inevitable that schools will also produce some waste that cannot be recycled or converted into compost. The amount of waste generated may increase in the short term especially as PPE such as gloves, disposable masks, wipes and plastic aprons will need to be placed in the general waste bin.

Where possible schools should use paper towels and disinfectant sprays rather than wipes. Wipes contain

plastic and must be disposed of in the general waste bin and never flushed down the toilet. Wet paper towels should also be disposed of in the general waste bin. Small quantities of paper towel used for wiping up after food can be placed in the food waste bin.

Where possible try to purchase recycled paper towels and toilet paper.



PUTTING OUT YOUR BINS

To reduce the potential for cross contamination, please follow this advice when putting out your school bins:

- Bins to be presented on the evening **before** scheduled collection.
- Handles of school bins to be **cleaned** with disinfectant where possible before and after presentation.
- **Wipes, cloths, gloves etc.** used for cleaning can be placed in your school general waste bin.

HOW TO MANAGE WASTE IF A SCHOOL MEMBER OR PUPIL IS TESTED COVID-19 POSITIVE

Waste must be managed in accordance with HSE guidelines. These are:

- Put all your personal waste (gloves, tissues, wipes, masks) in a bin bag and tie when almost full;
- Put this bin bag into a second bin bag and tie a knot;
- Store the bag safely for 3 days, then put the bag into your wheelie bin for collection.

Further details available at
www2.hse.ie/conditions/coronavirus

For more information on waste management, prevention and segregation go to www.mywaste.ie

